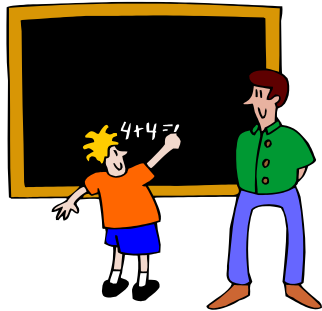


## ***Educational neglect***

Failing to register or enroll a child of mandatory school age and causing the child to stay at home for non legitimate reasons such as to care for a sibling or to work.



## ***Possible causes of neglect may include:***

- Parental alcoholism and/or drug abuse
- Parental despair
- Lack of knowledge or apathy
- Financial constraints
- Mental Health illnesses



## **Who to contact?**

Children's Helpline 4322626

Social Services 4281500

Social Affairs  
Department  
Social Services  
Division

**THE MINISTRY OF  
FAMILY AFFAIRS**

**SOCIAL SERVICES  
DIVISION**



**NEGLECT**

PO Box 190  
Victoria  
Tel: (248) 4281500 Fax: (248) 4225656



## Neglect is....

When a caregiver (e.g parents, any adult family member) who is responsible for the well being of a child deliberately or by inattentiveness permits a child to be subjected to avoidable suffering and/or fails to provide the child with necessary attention which is deemed as essential for that child's physical, psychological or emotional development.



## Types of neglect....

There are various types of neglect; some visible and others not. Some examples includes

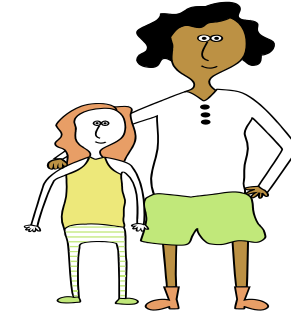
### *Physical Neglect*

- Delay and/or refusal by the caregiver to seek or allow needed medical care to be administered to a child.



- Leaving a child unsupervised or inadequately supervised for an extended period of time (e.g leaving a child alone in the house without an adult or with another child below the age of 12).

- Inattention to avoidable hazards in the home or outside or reckless disregard to a child's safety.
- Inadequate provision of food, clothing or hygiene.



### *Emotional Neglect*

- Lack of attention to a child's emotional needs such as affection, emotional support, etc..
- Exposure of the child to severe or extreme spouse abuse or other family violence.
- Encouraging or permitting drug or alcohol use by a child.