

CHILDREN'S HELPLINE
TEL: 4 32 26 26

Children's Helpline

The Children's Helpline is a telephone service that assists children and families who are in distress.

Any concerned citizen may also call on behalf of a child. The caller may remain anonymous.

Social Services' Child Protection Register

The Director Social Services maintains the child protection register which registers when a child has been identified as being at risk of significant harm. A child is de-registered when the risks factors have been eliminated, turns 18 or dies.

SOCIAL AFFAIRS DEPARTMENT

SOCIAL SERVICES DIVISION

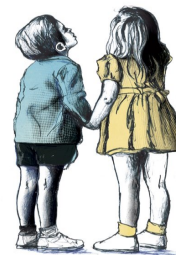
Tel: (248) 428 15 00 Fax: (248) 422 56 56



SOCIAL AFFAIRS DEPARTMENT

SOCIAL SERVICES DIVISION

Legal Services & Child Protection Section



THE ROLES OF THE SECTION ARE TO:

- ◆ Maintain society and alleviate social problems by providing the necessary assistance.
- ◆ Protect abused children and those who are at risk of harm.
- ◆ Attend to fostering, adoption, custody, access and maintenance matters.
- ◆ Provide therapy to children.
- ◆ Conduct preventive and re-integration programmes.
- ◆ Empower and safeguard the interest of children and their families.

ACTIVITIES OF THE SECTION

Legal Services

- ◆ Identify foster and adoptive parents.
- ◆ Arrange placements in foster homes following investigations.
- ◆ Facilitate the adoption process.
- ◆ Provide reports to the Courts and the Family Tribunal in relation to custody, access, maintenance, guardianship, adoption, interdicted minor's property and interdicted disabled adults property.
- ◆ Provide guidance and counselling to parties regarding children's issues.

Main Issues:

- Custody
- Maintenance
- Guardianship
- Foster care
- Access
- Adoption
- Minor's & interdicted persons property
- Reconciliation

Child Protection

- ◆ Work with children and their families by providing services to dys-functional families to restore social functioning.
- ◆ Protect abused children and those who are at risk of harm through clear intervention plans.
- ◆ Work in close collaboration and in partnership with child protection partners.
- ◆ Counsel, support and guide children and their families.
- ◆ Empower children to protect themselves.
- ◆ Conduct preventive work regarding abuse of children.
- ◆ Register children who are at risk.

Main Issues:

- Sexual abuse
- Emotional abuse
- Sexual Play
- Incest
- Physical abuse
- Placement
- Sexual assault